

IMPORTANT ONLINE AUCTION SALE

by order of

AMCOR FLEXIBLES

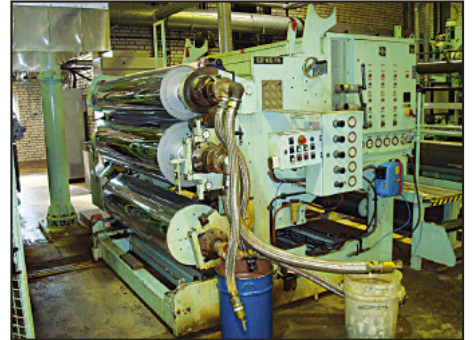
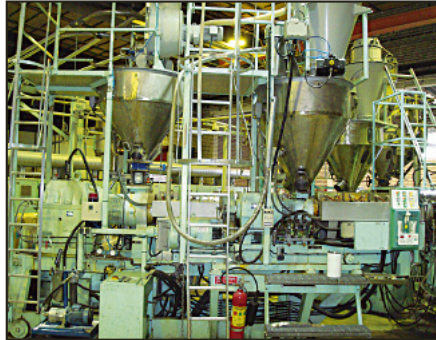
Rotogravure Packaging

SWEDEN : Maskinvägen 1 - 22100 Lund (± 10 km from Malmö)

SPAIN : Avda. de Burgos, 67 - 26006 Logroño

UK : Digby Street - Ilkeston - Derbyshire DE7 5TS

CASTING FILM LINE "ERWEPA"



LAMINATING MACHINE "SCHIAVI"



2004

**10 JUNE
TUESDAY**

	CLOSING AT	VIEWING
SWEDEN :	2.00 pm CET	Tuesday 3 June, 10 am - 4 pm or by appointment
SPAIN :	3.00 pm CET	by appointment only
UK :	4.00 pm CET	Thursday 5 June, 9 am - 4 pm

Bidding only on the internet

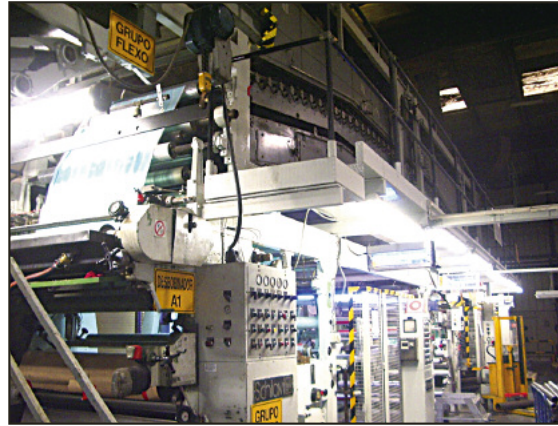
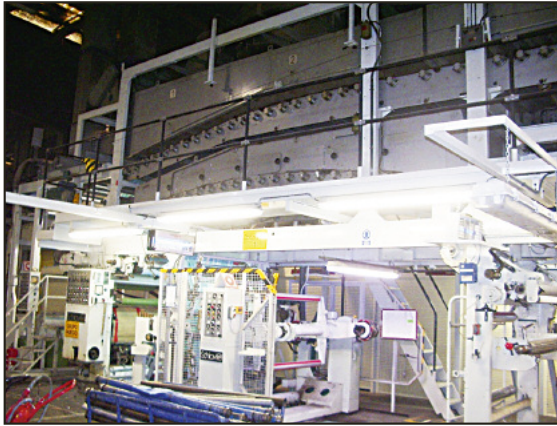
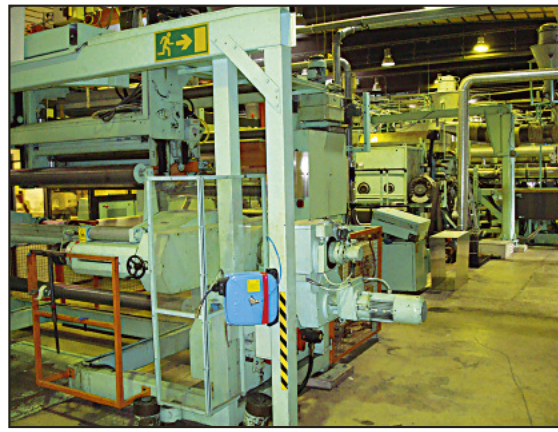
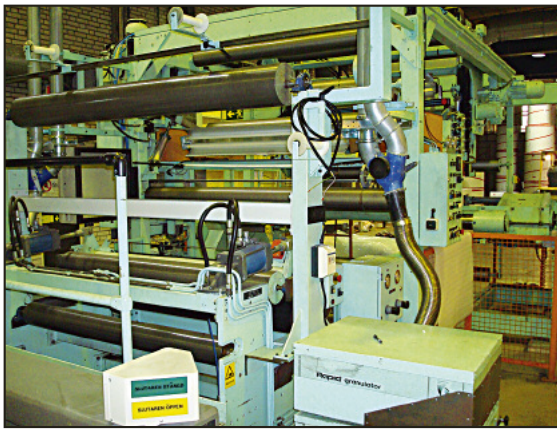
CATALOGUE ON OUR WEBSITE

INFO@TROOSTWIJKAUCTIONS.COM

TROOSTWIJK

INDUSTRIAL AUCTIONEERS & VALUERS SINCE 1930

WWW.TROOSTWIJKAUCTIONS.COM



SWEDEN - Lund

Tel.: +46 (0)705908635

info@Troostwijk.se

CASTING FILM LINE "ERWEPA" ('88), consisting of **4 EXTRUDERS** - up to 4,5 inch, **CO-EXTRUSION CASTING LINE** for sheets, for thermoforming, 200 - 600 micron, total output: up to 100 kg / h, with gauging system "EGS" Beta with automatic profile control; **Suitable materials: PS, APET, EVOH, Tie and Polyethylen;**

STRAPPER "Cyklop" XPIII (2004), roll width 1250 mm; **PALLET FOIL WRAPPER** "Leng" AP1900, foil roll width 500 mm; 7-fold roll conveyor track; **surface grinding machine** "Göckel" GB 3EL, cap. 200 x 2500 mm, stone ø 300 mm; honing machine "Sunnen"; shadowgraph "Nikon"; **autom. head space sampler** "Perkin Elmer" HS40; chromatograph "GC" Varian 3400; **4 AUTOMATIC GUIDED VEHICLES** (forklift)"AGV" FLB/32/1520, lifting height 1500 mm;

SPAIN - Logroño

Tel.: + 34 93 2406118

info@Troostwijk.es

DUPLEX AND TRIPLEX LAMINATING MACHINE "SCHIAVI" Convert Jet for dry bond and wet lamination, consisting of motorpump, drying tunnel (2 sections), lamination set, air knife, unwinders, rewinder, controls, web width 500 - 1250 mm, speed up to 200 m/min., unwinders reel ø up to 1.000 mm; **Materials: Paper, Al, PET, PP, Rigid PVC, PA, PE;** Applications **Flexo:** 1-4 gr/m² - **Rotogravure** 2-5 gr/m²;

UK - Ilkeston

Tel.: + 44 (0)114 246 6830

info@Troostwijk.co.uk

2 WIDE CENTRE SLITTERS (1600 mm) "Eldec" CS160S and CS125, unwind ø 800 mm, rewind ø 600 mm, speed 250 - 300 m/min.; **FLEXOCYLINDER PROOFING MACHINE** "Dupont" Cyrel Microflex MS 1320 (2001), max. face width 1320 mm; **5 conveyor storage racks for print cylinders** "Stancroft Chain", cap. 40 - 62 rolls, roll ø 175 mm, dim. each ± 2650 x 850 x 6250 mm; **2 forklift trucks** "BT" Rolatruc SB1000/6 and SH8E;



In case you wish to receive information about Troostwijk sales, please visit our website and register.